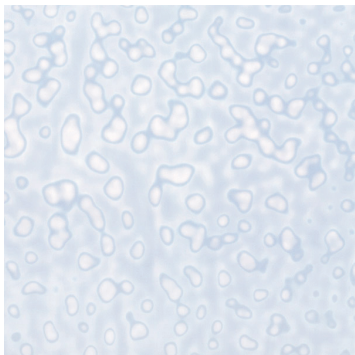
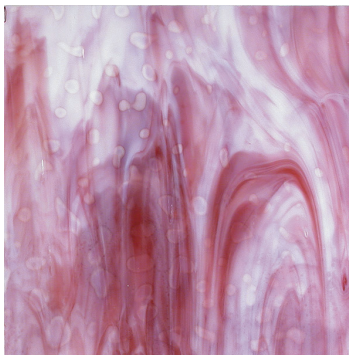


Ring Mottles are back!

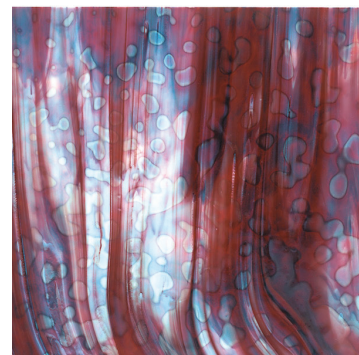
Beautiful non-fusible Tiffany reproductions for stained glass & mosaics. Available in our Online Store and at Resource Centers in the Bay Area, Los Angeles, New York, Portland and Santa Fe. Or see your local Bullseye dealer.



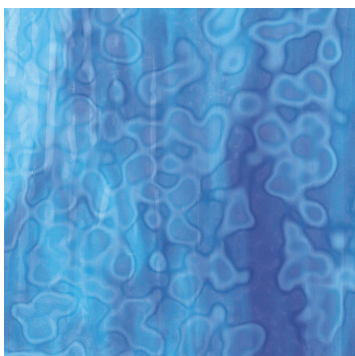
White Mottle (006013)



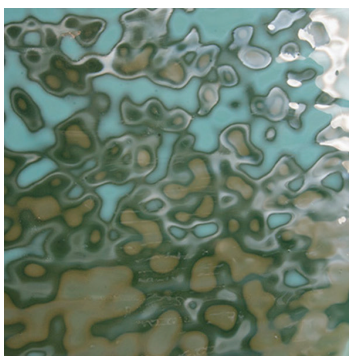
White, Gold Pink Mottle (006210)



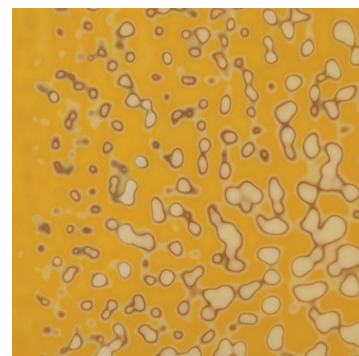
White, Burgundy Red Mottle (006231)



Robin's Egg, Deep Royal Blue Mottle (006264)



Patina Green Mottle (006045)



Toffee Mottle (006010)

About Our Ring Mottles

Louis Comfort Tiffany first developed ring mottles in the early 20th century. Artists use them to create the impression of dappled sunlight on petals, leaves, grass, or water in stained glass windows and lampshades.

Bullseye Ring Mottle sheet glasses are non-fusible and not intended for kilnwork. Their formulas are not Bullseye Compatible, and they are not tested for compatibility.

The mottle patterning, which develops in manufacturing, is heatwork sensitive and changes when fired. At full fuse temperatures, mottles almost completely disappear.