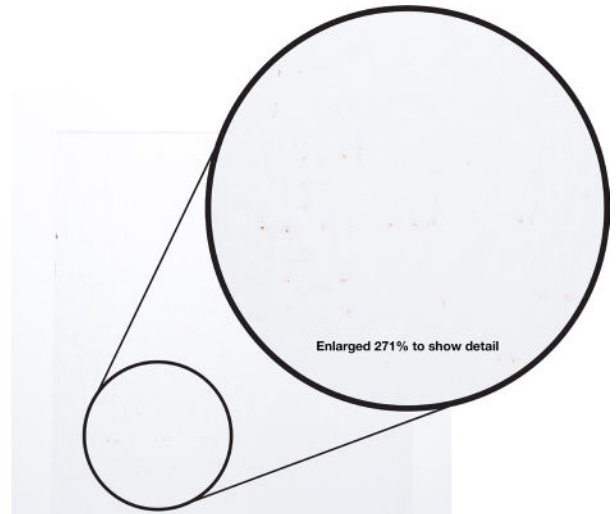
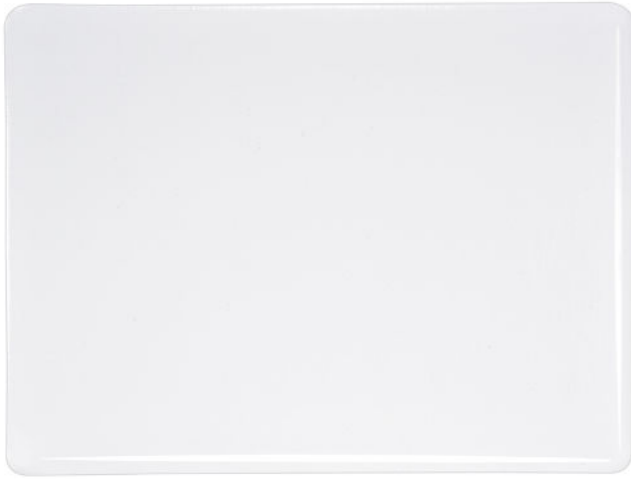




Clear Transparent Tekta Sheet Glass



COLD CHARACTERISTICS

Very faint green tint when viewed on edge.

WORKING NOTES

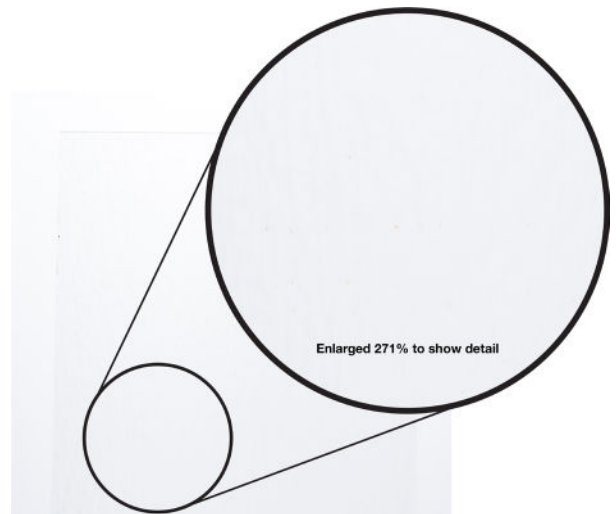
Stable. No color shift.

Brown-Orange Marks on Tekta

After years of experiments, we've found that the best separator for keeping a newly formed sheet of Tekta from sticking to our annealing lehr's metal conveyor belt is natural iron oxide, aka rust that forms on the belt as a result of thermal cycling.

As a result of this production process, rust will occasionally imprint upon sheets during annealing. These imprints almost always wash off. (For ease, we recommend using a [Scotch Brite pad](#), but a normal rag will usually work too.)

In rare cases, when they resist complete cleaning, they will dissipate in a full fuse. In short, these marks fall within our quality standards, and will be undetectable in a full fuse.



Pictured at right from top to bottom: Clear Tekta (001100-0380) uncleaned, same piece cleaned, same piece fired on Warm White (000920-0030).